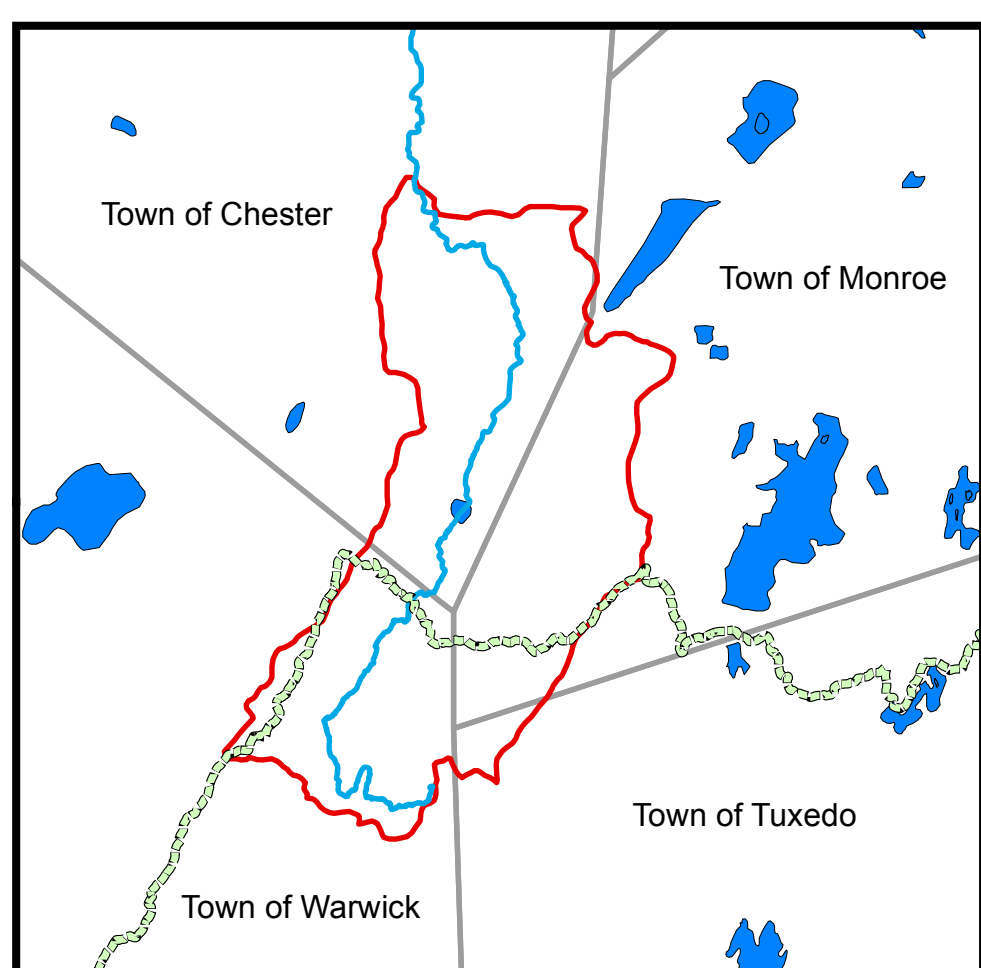
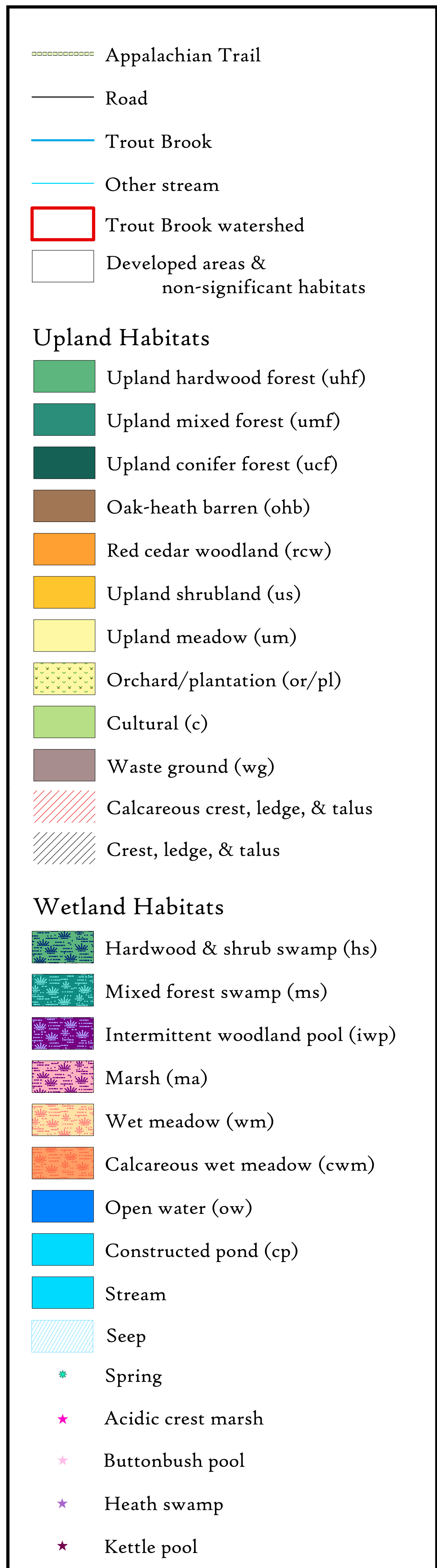


# SIGNIFICANT HABITATS OF THE TROUT BROOK WATERSHED, ORANGE COUNTY, NY



Habitats were identified through map analysis and aerial photograph interpretation, and as many locations as practicable were field-verified. Mapping and field work were done primarily by Hudsonia biologists Andrew Meyer, Nava Tabak, and Kristen Bell. Color infrared photographs in the USGS NAPP series, taken in spring 1994 (scale 1:40,000), were used for stereoscopic photointerpretation. Habitats were digitized onscreen over true color and color infrared orthophoto images taken in spring 2007 and 2001, respectively, available from the New York State GIS Clearinghouse. The report prepared in conjunction with these maps (Meyer and Stevens 2010) explains the habitat identification and mapping methods, describes the ecological significance of each habitat type, and offers conservation recommendations.

Road locations and names were obtained from the Orange County GIS website and modified by Hudsonia where necessary. The general location of the Appalachian Trail was published by the Appalachian Trail Conservancy and National Park Service (2007), obtained from the Appalachian Trail Conservancy website, and modified by Hudsonia to better reflect its location.

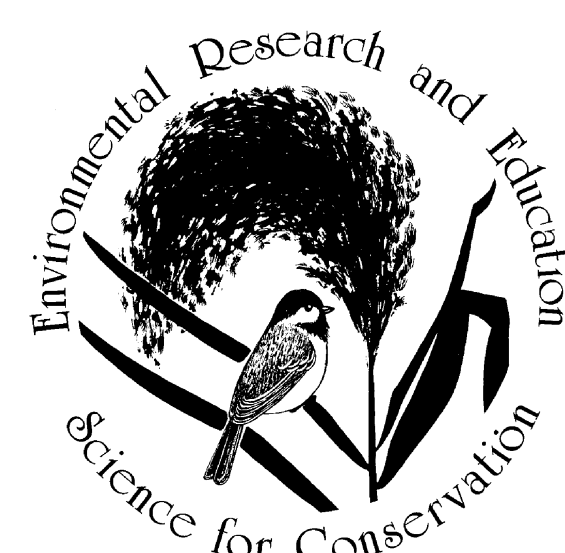
Some habitat can only be identified in the field. Question marks on the map indicate some unchecked areas where such habitats may occur.

This map was created using ArcView 9.2 GIS software and printed on a Hewlett Packard DesignJet 800PS plotter.

Funding for this project was part of a settlement between the New York State Department of Environmental Conservation and a business corporation for violations of the Environmental Conservation Law.

For more information contact Andrew Meyer or Gretchen Stevens, Hudsonia Ltd., 845-758-0600.

**An important caution:**  
 This map is suitable for general land-use planning, but is not suitable for detailed planning and site design, or for jurisdictional determinations (e.g., for wetlands). Boundaries of wetlands and other habitats depicted here are only approximate.



Hudsonia Ltd.  
 P.O. Box 66  
 Red Hook, NY 12571  
 www.hudsonia.org