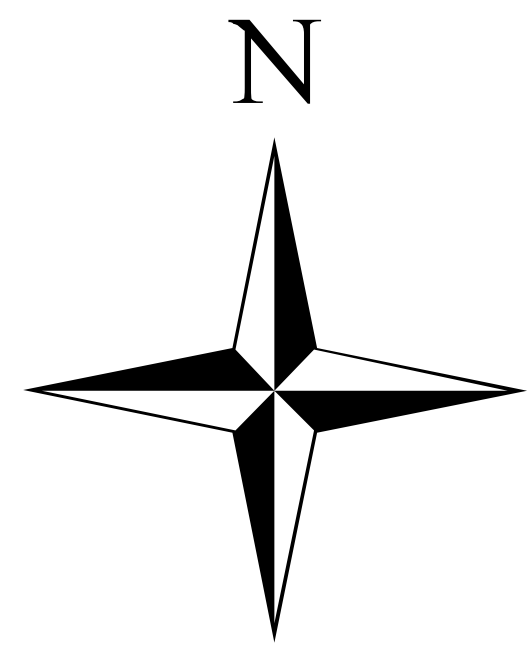
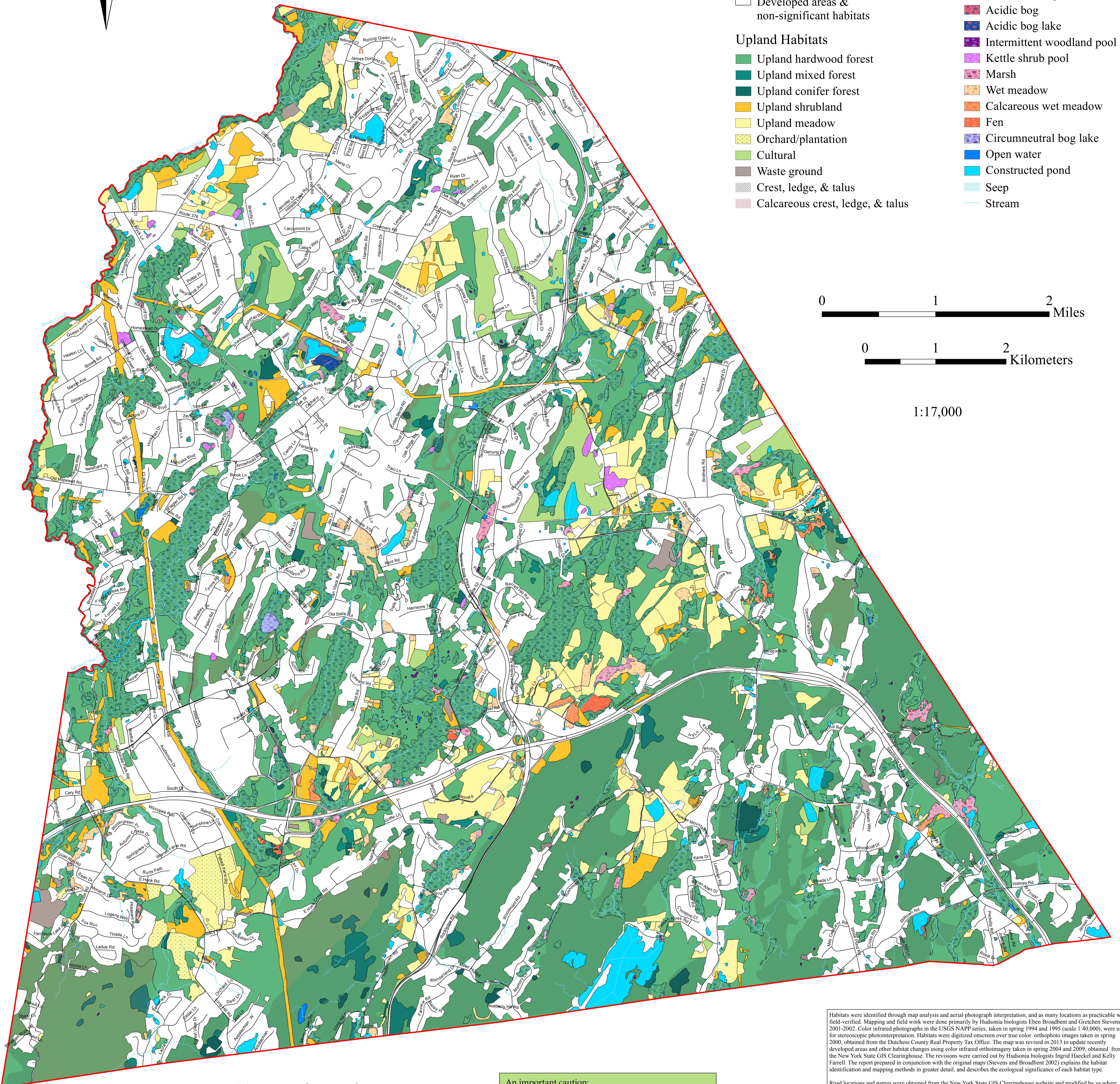


# SIGNIFICANT HABITATS IN THE TOWN OF EAST FISHKILL, DUTCHESS COUNTY, NY

(See sheets 1 - 3 for greater detail.)



- Town boundary
  - Road
  - ? Question
  - Developed areas & non-significant habitats
- Upland Habitats**
- Upland hardwood forest
  - Upland mixed forest
  - Upland conifer forest
  - Upland shrubland
  - Upland meadow
  - Orchard/plantation
  - Cultural
  - Waste ground
  - Crest, ledge, & talus
  - Calcareous crest, ledge, & talus
- Wetland Habitats**
- Hardwood and shrub swamp
  - Mixed forest swamp
  - Conifer swamp
  - Acidic bog
  - Acidic bog lake
  - Intermittent woodland pool
  - Kettle shrub pool
  - Marsh
  - Wet meadow
  - Calcareous wet meadow
  - Fen
  - Circumneutral bog lake
  - Open water
  - Constructed pond
  - Seep
  - Stream



0 1 2 Miles

0 1 2 Kilometers

1:17,000



Hudsonia Ltd.  
P.O. Box 5000  
Annandale, NY 12504  
[www.hudsonia.org](http://www.hudsonia.org)

**An important caution:**

This map is suitable for general land-use planning, but is not suitable for detailed planning and site design, or for jurisdictional determinations (e.g., for wetlands). Boundaries of wetlands and other habitats depicted here are only approximate.

Habitats were identified through map analysis and aerial photograph interpretation, and as many locations as practicable were field-verified. Mapping and field work were done primarily by Hudsonia biologists Eben Broadbent and Gretchen Stevens in 2001-2002. Color infrared photographs in the USGS NAPP series, taken in spring 1994 and 1995 (scale 1:40,000), were used for stereoscopic photointerpretation. Habitats were digitized onscreen over true color orthophoto images taken in spring 2000, obtained from the Dutchess County Real Property Tax Office. The map was revised in 2013 to update recently developed areas and other habitat changes using color infrared orthomosaic taken in spring 2004 and 2009, obtained from the New York State GIS Clearinghouse. The revisions were carried out by Hudsonia biologists Ingrid Haeckel and Kelly Farrell. The report prepared in conjunction with the original maps (Stevens and Broadbent 2002) explains the habitat identification and mapping methods in greater detail, and describes the ecological significance of each habitat type.

Road locations and names were obtained from the New York State GIS Clearinghouse website and modified by us where necessary.

This map was created using ArcGIS Desktop 10.1 software on a Dell Vostro 1500 computer and printed on a Hewlett Packard DesignJet 800PS plotter.

Funds for this project were provided to Hudsonia Ltd. by the Marilyn Milton Simpson Charitable Trusts. Funding for the 2013 revision was provided through a Hudson River Estuary Program Biodiversity Education grant.

For more information, contact Gretchen Stevens, Hudsonia Ltd., 845-758-7053.